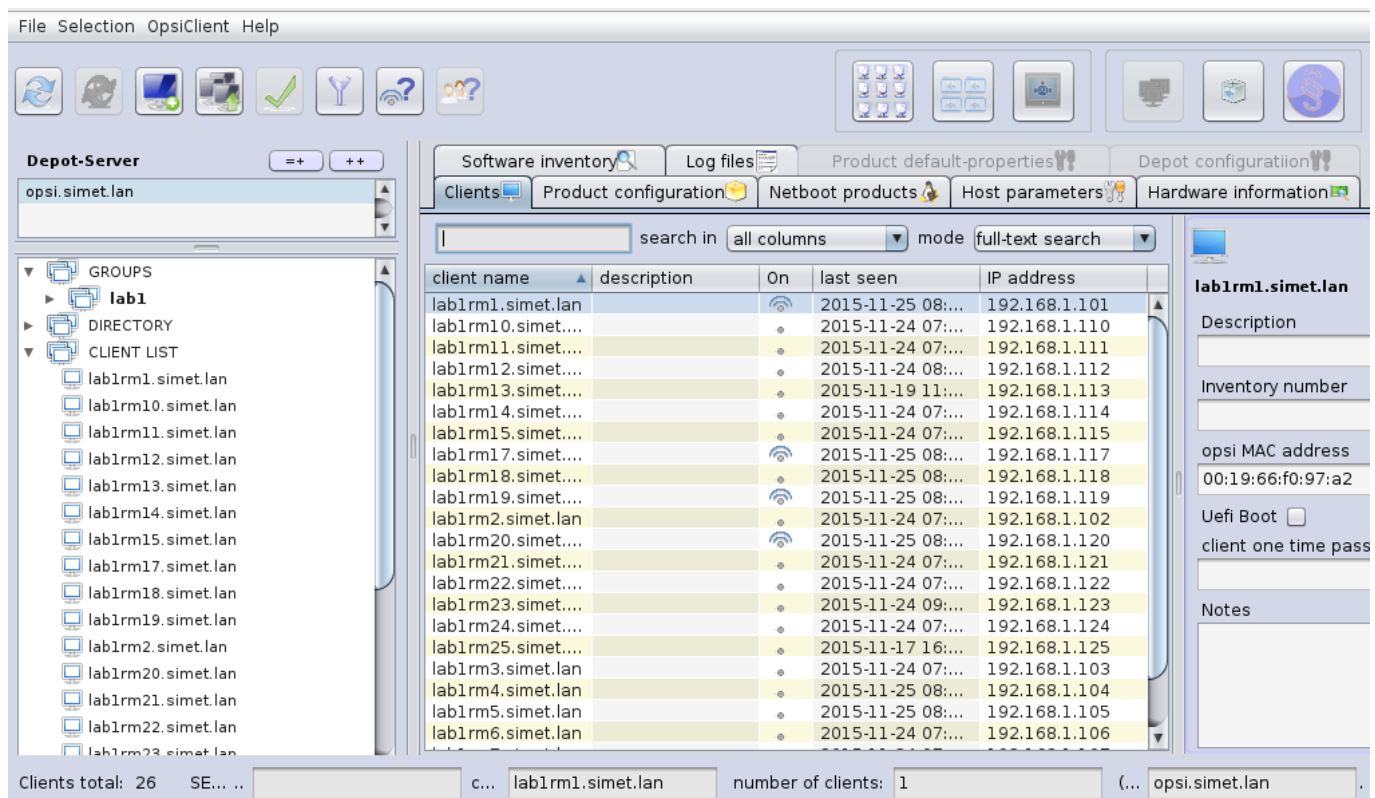


## Opsi server - popis hardvera i softvera



Krajem kalendarske godine tradicionalno se obavlja inventura proteklog razdoblja. Trgovci zbrajaju robu na skladištu, tvrtke i ustanove popisuju pokretnu, nepokretnu imovinu. U našem poslu dobro je imati popisan hardver i softver, tako da ste uvijek spremni za slučaj da od vas traže takve podatke. Opsiserver ima odličnu podršku za taj "dosadan" posao.

Pošto smo se već u ranijim člancima upoznali s web sučeljem zvanim opsi *configuration editor*, ulogirajmo se na poznati način. Pronađimo u GROUPS našu grupu lab1 kreiranu u [prethodnom članku](#) [1]. Odaberimo prvog klijenta po redosljedu koji je *online*, kako bi na njega instalirali softver za vođenje inventara.



client name	description	On	last seen	IP address
lab1rm1.simet.lan		●	2015-11-25 08:...	192.168.1.101
lab1rm10.simet....		●	2015-11-24 07:...	192.168.1.110
lab1rm11.simet....		●	2015-11-24 07:...	192.168.1.111
lab1rm12.simet....		●	2015-11-24 08:...	192.168.1.112
lab1rm13.simet....		●	2015-11-19 11:...	192.168.1.113
lab1rm14.simet....		●	2015-11-24 07:...	192.168.1.114
lab1rm15.simet....		●	2015-11-24 07:...	192.168.1.115
lab1rm17.simet....		●	2015-11-25 08:...	192.168.1.117
lab1rm18.simet....		●	2015-11-25 08:...	192.168.1.118
lab1rm19.simet....		●	2015-11-25 08:...	192.168.1.119
lab1rm2.simet.lan		●	2015-11-24 07:...	192.168.1.102
lab1rm20.simet....		●	2015-11-25 08:...	192.168.1.120
lab1rm21.simet....		●	2015-11-24 07:...	192.168.1.121
lab1rm22.simet....		●	2015-11-24 07:...	192.168.1.122
lab1rm23.simet....		●	2015-11-24 09:...	192.168.1.123
lab1rm24.simet....		●	2015-11-24 07:...	192.168.1.124
lab1rm25.simet....		●	2015-11-17 16:...	192.168.1.125
lab1rm3.simet.lan		●	2015-11-24 07:...	192.168.1.103
lab1rm4.simet.lan		●	2015-11-25 08:...	192.168.1.104
lab1rm5.simet.lan		●	2015-11-25 08:...	192.168.1.105
lab1rm6.simet.lan		●	2015-11-24 07:...	192.168.1.106

Prebacimo se u *Product configuration* karticu, selektiramo *hwaudit*, zatražimo *setup* te *Execute now* pa potom *Save*. Ili zatražimo *setup* pa *reboot* klijenta. U oba slučaja bit će pokrenuta instalacija traženog proizvoda, odnosno modula za vođenje inventara.

File Selection OpsiClient Help

Depot-Server: opsi.simet.lan

GROUPS: lab1, DIRECTORY, CLIENT LIST

CLIENT LIST: lab1rm1.simet.lan, lab1rm10.simet.lan, lab1rm11.simet.lan, lab1rm12.simet.lan, lab1rm13.simet.lan, lab1rm14.simet.lan, lab1rm15.simet.lan, lab1rm17.simet.lan, lab1rm18.simet.lan, lab1rm19.simet.lan, lab1rm2.simet.lan, lab1rm20.simet.lan, lab1rm21.simet.lan, lab1rm22.simet.lan, lab1rm23.simet.lan

Software inventory | Log files | Product default-properties | Depot configuration

Clients | Product configuration | Netboot products | Host parameters | Hardware information

search in: all columns | mode: start-text search

Selected product group: (none)

Product ID	Status	Report	Requested ...	Version
config-win-base				
hwaudit				
javavm				
jedit				
opsi-adminutils				
opsi-client-agent	installed	success		4.0.5.2-2
opsi-configed				
opsi-setup-detector				
opsi-set-win-uac				
opsi-template				
opsi-template-with-admin				
opsi-uefi-netboot				
opsi-winst				
opsi-winst-test				
shutdownwanted				
swaudit				

Client Hard..  
 Softw... 4.0.5-:  
 Hardwareinve  
 Dependencies  
 Pr... Pr...  
 log... 3  
 tail... 0  
 tim... 90

Clients total: 26 | SE... | c... lab1rm1.simet.lan | number of clients: 1 | (... opsi.simet.lan

File Selection OpsiClient Help

Depot-Server: opsi.simet.lan

GROUPS: lab1, DIRECTORY, CLIENT LIST

CLIENT LIST: lab1rm1.simet.lan, lab1rm10.simet.lan, lab1rm11.simet.lan, lab1rm12.simet.lan, lab1rm13.simet.lan, lab1rm14.simet.lan, lab1rm15.simet.lan, lab1rm17.simet.lan, lab1rm18.simet.lan, lab1rm19.simet.lan, lab1rm2.simet.lan, lab1rm20.simet.lan, lab1rm21.simet.lan, lab1rm22.simet.lan, lab1rm23.simet.lan

Software inventory | Log files | Product default-properties | Depot configuration

Clients | Product configuration | Netboot products | Host parameters | Hardware information

search in: all columns | mode: start-text search

Selected product group: (none)

Product ID	Status	Report	Requested ...	Version
config-win-base				
hwaudit			setup	
javavm				
jedit				
opsi-adminutils				
opsi-client-agent	installed	success		4.0.5.2-2
opsi-configed				
opsi-setup-detector				
opsi-set-win-uac				
opsi-template				
opsi-template-with-admin				
opsi-uefi-netboot				
opsi-winst				
opsi-winst-test				
shutdownwanted				
swaudit				

Client Hard..  
 Softw... 4.0.5-:  
 Hardwareinve  
 Dependencies  
 Pr... Pr...  
 log... 3  
 tail... 0  
 tim... 90

Clients total: 26 | SE... | c... lab1rm1.simet.lan | number of clients: 1 | (... opsi.simet.lan

File Selection OpsiClient Help

Depot-Server  
opsi.simet.lan

GROUPS  
lab1  
DIRECTORY  
CLIENT LIST  
lab1rm1.simet.lan  
lab1rm10.simet.lan  
lab1rm11.simet.lan  
lab1rm12.simet.lan  
lab1rm13.simet.lan  
lab1rm14.simet.lan  
lab1rm15.simet.lan  
lab1rm17.simet.lan  
lab1rm18.simet.lan  
lab1rm19.simet.lan  
lab1rm2.simet.lan  
lab1rm20.simet.lan  
lab1rm21.simet.lan  
lab1rm22.simet.lan  
lab1rm23.simet.lan

Software inventory | **Log files** | Product default-properties | Depot configuration

Clients | Product configuration | Netboot products | Host parameters | Hardware information

search in all columns mode start-text search

Selected product group (none)

Product ID	Status	Report	Requested ...	Version
config-win-base				
hwaudit		setup		
javavm				
jedit				
opsi-adminutils				
opsi-client-agent	installed	success		
opsi-configd				
opsi-setup-detector				
opsi-set-win-uac				
opsi-template				
opsi-template-with-admin				
opsi-uefi-netboot				
opsi-winst				
opsi-winst-test				
shutdownwanted				
swaudit				

hwaudit  
Client Hard...  
Softw... 4.0.5-  
Hardwareinve

Save  
Execute now ("on\_demand")  
**Reload**  
Visible columns

log...  
log... 3  
tail... 0  
tim... 90

Clients total: 26 SE... c... lab1rm1.simet.lan number of clients: 1 (... opsi.simet.lan)

File Selection OpsiClient Help

Depot-Server  
opsi.simet.lan

GROUPS  
lab1  
DIRECTORY  
CLIENT LIST  
lab1rm1.simet.lan  
lab1rm10.simet.lan  
lab1rm11.simet.lan  
lab1rm12.simet.lan  
lab1rm13.simet.lan  
lab1rm14.simet.lan  
lab1rm15.simet.lan  
lab1rm17.simet.lan  
lab1rm18.simet.lan  
lab1rm19.simet.lan  
lab1rm2.simet.lan  
lab1rm20.simet.lan  
lab1rm21.simet.lan  
lab1rm22.simet.lan  
lab1rm23.simet.lan

Product default-properties | Depot configuration

Host parameters | Hardware information

mode full-text search

lab1rm1.simet.lan

Do you want to reboot the following clients?  
lab1rm1.simet.lan

No Yes

IP address
08:... 192.168.1.101
07:... 192.168.1.110
07:... 192.168.1.111
08:... 192.168.1.112
11:... 192.168.1.113
07:... 192.168.1.114
07:... 192.168.1.115
08:... 192.168.1.117
08:... 192.168.1.118
08:... 192.168.1.119
07:... 192.168.1.102
08:... 192.168.1.120
07:... 192.168.1.121
07:... 192.168.1.122
09:... 192.168.1.123
07:... 192.168.1.124
16:... 192.168.1.125
07:... 192.168.1.103
08:... 192.168.1.104
08:... 192.168.1.105
07:... 192.168.1.106

lab1rm1.simet.lan  
Description  
Inventory number  
opsi MAC address  
00:19:66:f0:97:a2  
Uefi Boot   
client one time pass  
Notes

Clients total: 26 SE... c... lab1rm1.simet.lan number of clients: 1 (... opsi.simet.lan)

Desni klik *Reload* opcija nam može osvježiti progres instalacije klijentskog računala.

File Selection OpsiClient Help

Depot-Server: opsi.simet.lan

GROUPS: lab1, DIRECTORY, CLIENT LIST

CLIENT LIST: lab1rm1.simet.lan, lab1rm10.simet.lan, lab1rm11.simet.lan, lab1rm12.simet.lan, lab1rm13.simet.lan, lab1rm14.simet.lan, lab1rm15.simet.lan, lab1rm17.simet.lan, lab1rm18.simet.lan, lab1rm19.simet.lan, lab1rm2.simet.lan, lab1rm20.simet.lan, lab1rm21.simet.lan, lab1rm22.simet.lan, lab1rm23.simet.lan

Software inventory | Log files | Product default-properties | Depot configuration

Clients | Product configuration | Netboot products | Host parameters | Hardware information

search in: all columns | mode: start-text search

Selected product group: (none)

Product ID	Status	Report	Requested ...	Version
config-win-base				
hwaudit	unknown	installing ( )	setup	
javavm				
jedit				
opsi-adminutils				
opsi-client-agent	installed	success		4.0.5.2-2
opsi-configed				
opsi-setup-detector				
opsi-set-win-uac				
opsi-template				
opsi-template-with-admin				
opsi-uefi-netboot				
opsi-winst	installed	success		4.11.4.15-1
opsi-winst-test				
shutdownwanted				
swaudit				

hwaudit Client Hard...  
 Softw... 4.0.5-  
 Hardwareinve  
 Dependencies  
 Pr... Pr...  
 log...  
 log... 3  
 tail... 0  
 tim... 90

Clients total: 26 SE... c... lab1rm1.simet.lan number of clients: 0 (... opsi.simet.lan)

File Selection OpsiClient Help

Depot-Server: opsi.simet.lan

GROUPS: lab1, DIRECTORY, CLIENT LIST

CLIENT LIST: lab1rm1.simet.lan, lab1rm10.simet.lan, lab1rm11.simet.lan, lab1rm12.simet.lan, lab1rm13.simet.lan, lab1rm14.simet.lan, lab1rm15.simet.lan, lab1rm17.simet.lan, lab1rm18.simet.lan, lab1rm19.simet.lan, lab1rm2.simet.lan, lab1rm20.simet.lan, lab1rm21.simet.lan, lab1rm22.simet.lan, lab1rm23.simet.lan

Software inventory | Log files | Product default-properties | Depot configuration

Clients | Product configuration | Netboot products | Host parameters | Hardware information

search in: all columns | mode: start-text search

Selected product group: (none)

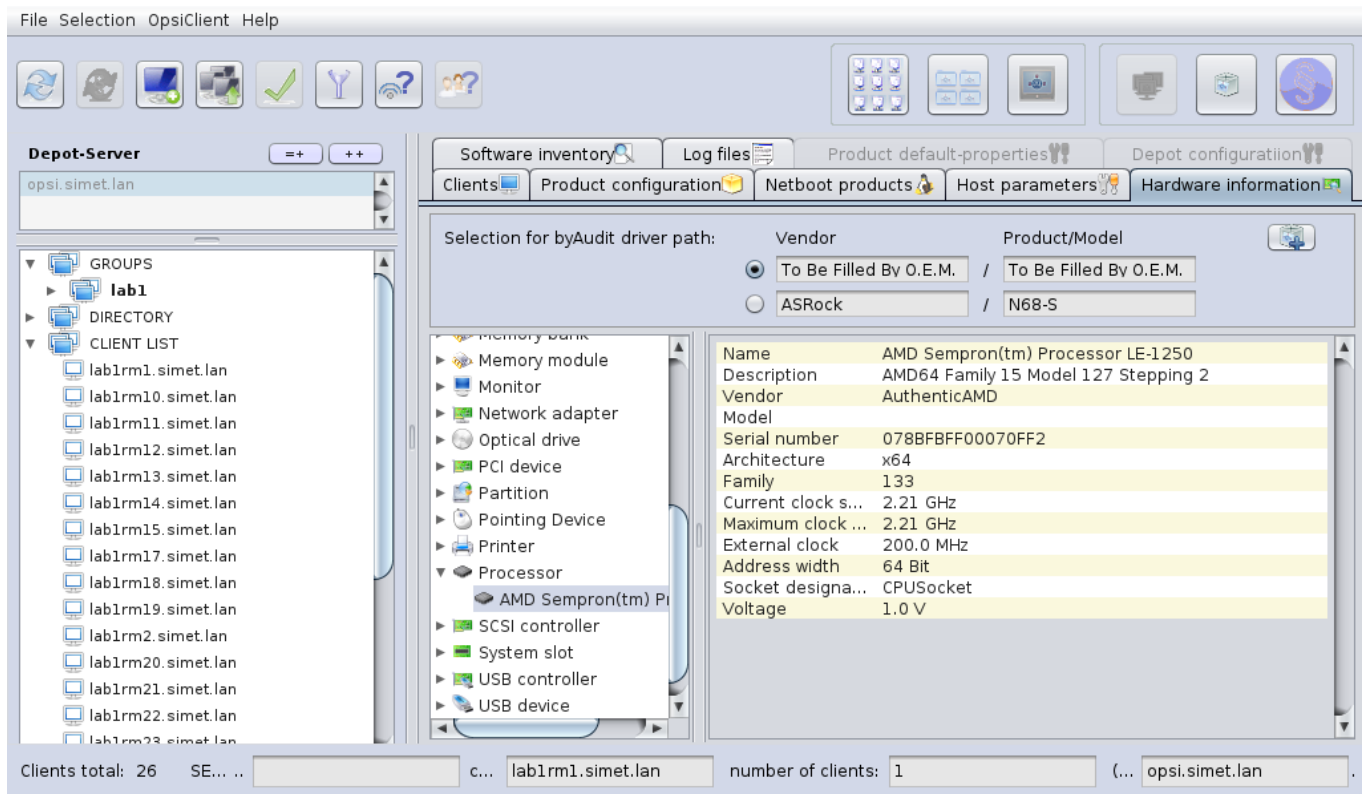
Product ID	Status	Report	Requested ...	Version
config-win-base				
hwaudit	installed	success		4.0.5-1
javavm				
jedit				
opsi-adminutils				
opsi-client-agent	installed	success		4.0.5.2-2
opsi-configed				
opsi-setup-detector				
opsi-set-win-uac				
opsi-template				
opsi-template-with-admin				
opsi-uefi-netboot				
opsi-winst	installed	success		4.11.4.15-1
opsi-winst-test				
shutdownwanted				
swaudit				

hwaudit Client Hard...  
 Softw... 4.0.5-  
 Hardwareinve  
 Dependencies  
 Pr... Pr...  
 log...  
 log... 3  
 tail... 0  
 tim... 90

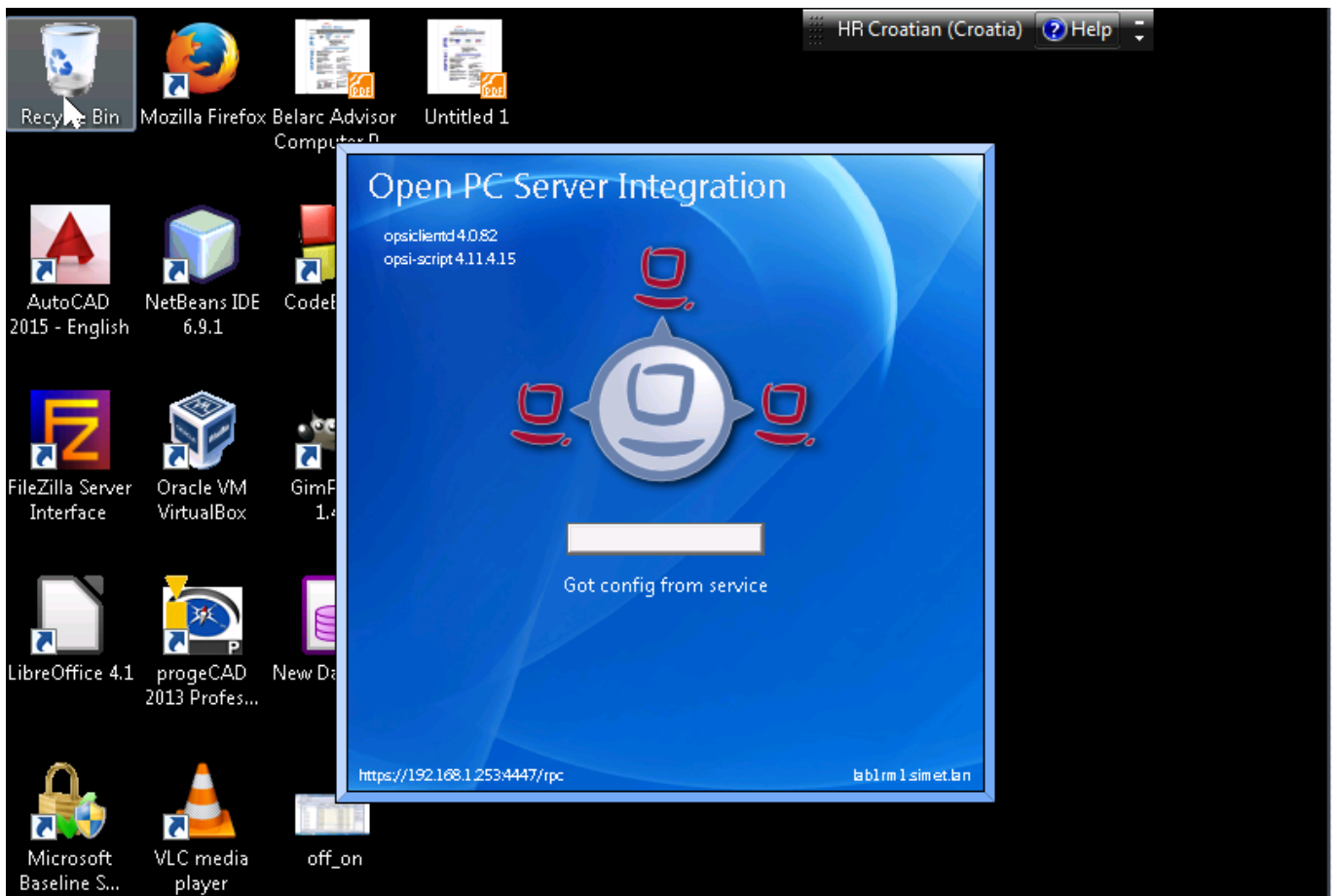
Clients total: 26 SE... c... lab1rm1.simet.lan number of clients: 1 (... opsi.simet.lan)

Nakon uspješne instalacije prebacimo se na *Hardware information* karticu, gdje možemo prelistati hardverske karakteristike instaliranog klijentskog računala.

i



Na identičan način instaliramo modul za softverski inventar kroz *Product configuration* karticu, selektiranjem retka *swaudit*. Nakon pokrenute akcije "instalacija na Windows 7 klijenta", napredak procesa izgleda kao na ilustraciji.







Nakon instalacije *Software inventory* kartica daje pregled dostupne verzije softvera, arhitekture na određenom klijentu.

Ukratko, s nekoliko klikova kroz *opsi configuration editor* dobili smo informaciju o raspoloživom hardveru i softveru na određenom klijentskom računalu. Inventura može početi :)

Trebalo bi još napisati upit (query) za lijepo formatiran izvještaj. Zasad, napravite *copy&paste* podataka u tablični kalkulator.

File Selection OpsiClient Help

Depot-Server  
opsi.simet.lan

GROUPS  
lab1  
lab1rm1.simet.lan  
lab1rm10.simet.lan  
lab1rm11.simet.lan  
lab1rm12.simet.lan  
lab1rm13.simet.lan  
lab1rm14.simet.lan  
lab1rm15.simet.lan  
lab1rm17.simet.lan  
lab1rm18.simet.lan  
lab1rm19.simet.lan  
lab1rm2.simet.lan  
lab1rm20.simet.lan  
lab1rm21.simet.lan  
lab1rm22.simet.lan  
lab1rm23.simet.lan  
lab1rm24.simet.lan  
lab1rm25.simet.lan

Clients Product configuration Netboot products Host parameters Hardware information  
 Software inventory Log files Product default-properties Depot configuration

Software inventory lab1rm1.simet.lan (as at 2015-12-07 12:54:38)

name	version	subversi...	archit...	...	licenseKey	windowsS...
AutoCAD 2015 - English	20.0.51.0		x64			{5783f2d...
AutoCAD 2015 Language Pack - English	20.0.51.0		x64			{5783f2d...
Autodesk Application Manager	4.0.69.0		x86			autodesk ...
Autodesk App Manager	1.2.0		x86			{c812554...
Autodesk AutoCAD 2015 - English	20.0.51.0		x64			autocad ...
Autodesk AutoCAD Performance Feed...	1.2.2.0		x86			{857354...
Autodesk BIM 360 Glue AutoCAD 2015...			x64			autodesk ...
Autodesk BIM 360 Glue AutoCAD 2015...	3.32.3004		x64			{9d5890...
Autodesk Content Service	3.2.0.0		x86			{a37cdb5...
Autodesk Content Service Language P...	3.2.0.0		x86			{a37cdb5...
Autodesk Featured Apps	1.2.0		x86			{eddee9...
Autodesk Material Library 2015	5.2.9.100		x86			{427f733...
Autodesk Material Library 2015			x86			autodesk ...
Autodesk Material Library Base Resolu...	5.2.9.100		x86			{abe2f70...
Autodesk Material Library Base Resolu...			x86			autodesk ...
Classic Shell	3.6.8		x64			{fea1590...
Connection Manager			x64			connectio...
Connection Manager			x86			connectio...
CrypTool 1.4.30	1.4.30		x86			cryptool
Crystal Reports for Visual Studio	12.51.0.240		x86			{ac41d92...
DirectDrawEx			x64			directdra...
DirectDrawEx			x86			directdra...

Clients total: 26 SE... c... lab1rm1.simet.lan number of clients: 1 (... opsi.simet.lan

Vezani članci:

[Opsi server - Instalacija](#) [2]

[Opsi server - konfiguracija](#) [3]

[Priprema 64-bitne instalacije Windowsa 7 za Opsi server](#) [4]

[Nenadzirana instalacija Windowsa 7 preko mreže](#) [5]

[Instalacija Opsi klijenta](#) [6]

[Opsi server u računalnoj učionici](#) [1]

pon, 2015-12-21 10:52 - Goran Šljivić **Vijesti:** [Linux](#) [7]

**Kategorije:** [Software](#) [8]

**Vote:** 0

No votes yet

**Source URL:** https://sysportal.carnet.hr/node/1591

### Links

[1] https://sysportal.carnet.hr/node/1562

[2] https://sysportal.carnet.hr/node/1541



- [3] <https://sysportal.carnet.hr/node/1546>
- [4] <https://sysportal.carnet.hr/node/1548>
- [5] <https://sysportal.carnet.hr/node/1550>
- [6] <https://sysportal.carnet.hr/node/1554>
- [7] <https://sysportal.carnet.hr/taxonomy/term/11>
- [8] <https://sysportal.carnet.hr/taxonomy/term/25>