

Prepoznavanje sklopovlja: Hardware lister



Za naredbu **lshw** napravljeno je grafičko sučelje, dostupno instalacijom paketa **lshw-gtk**. Tako će je lakše koristiti mlađe generacije, koje nisu odrasle uz komandnu liniju. :) Svi dostupni podaci o sklopovlju računala bit će vam prikazani u grafičkom sučelju, što će mnogima biti dodatan argument za korištenje alata koji je poznat i pod nazivom **Hardware lister**.

Paket se instalira jednostavno:

```
# apt-get install lshw-gtk
```

Pokrenuti se može s komandne linije, s root ovlastima:

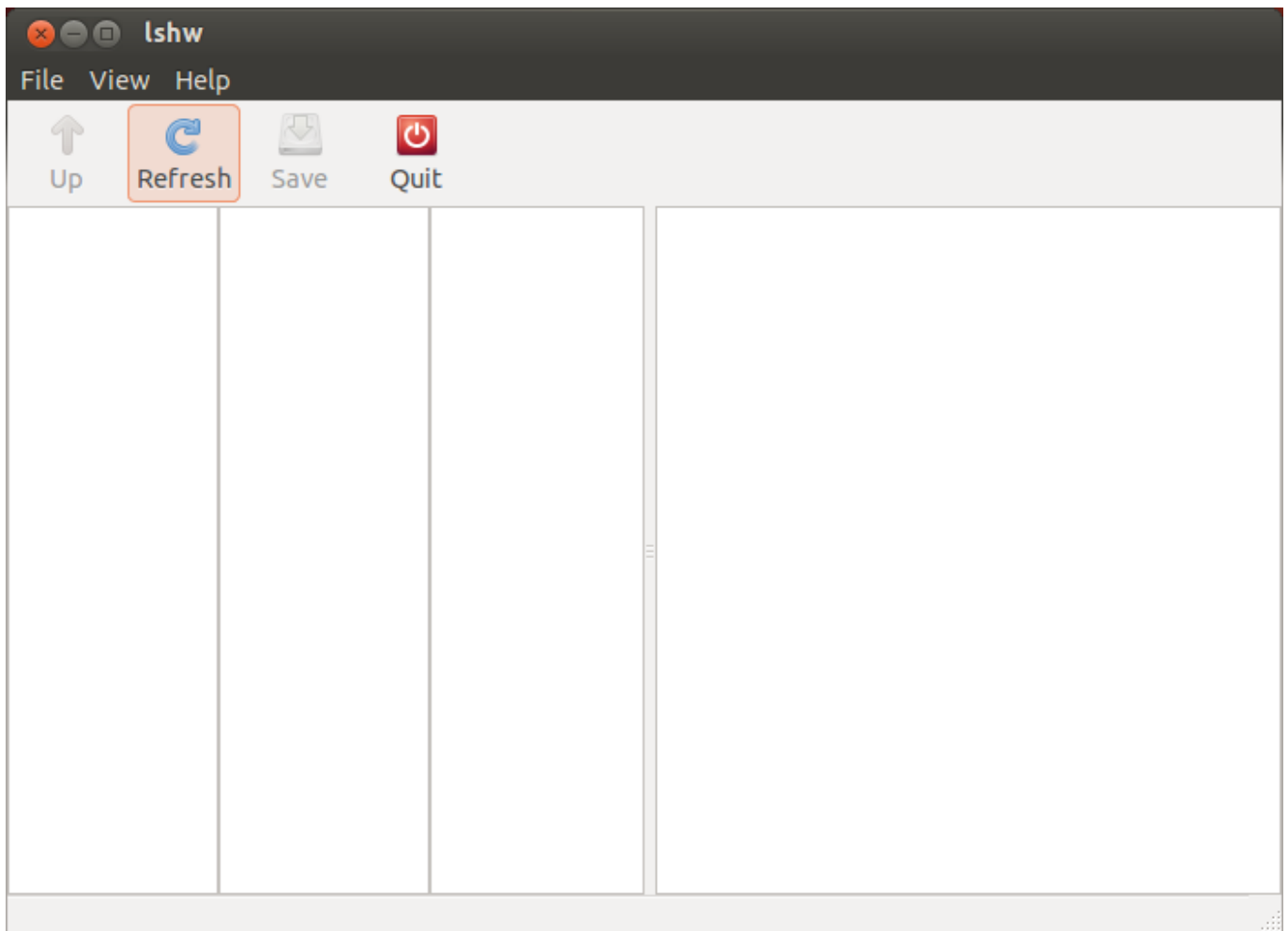
```
# lshw-gtk &
```

ili kao običan korisnik:

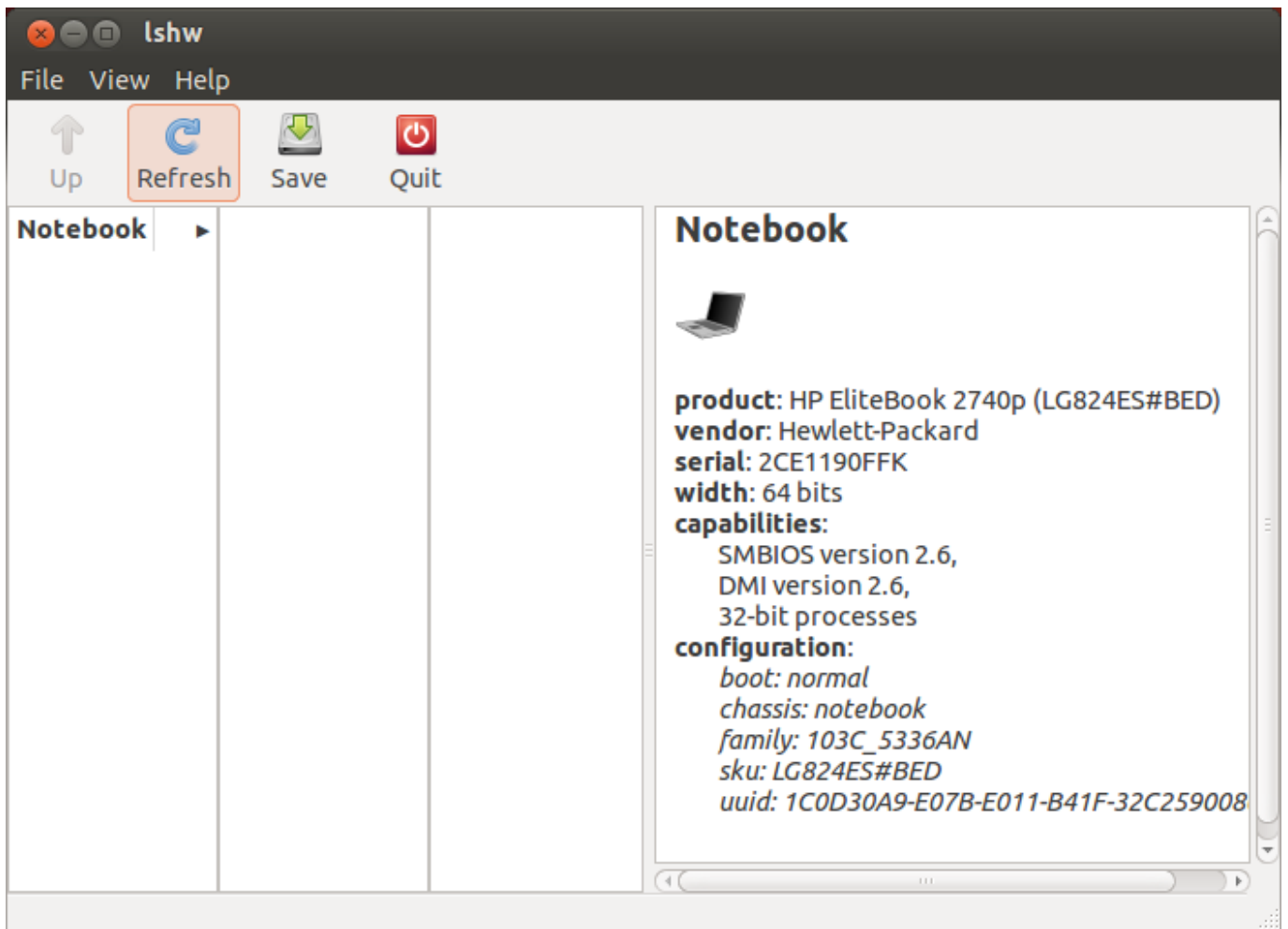
```
$ sudo lshw-gtk &
```

Na Ubuntuu ćete ga naći pod imenom **Hardware lister**.

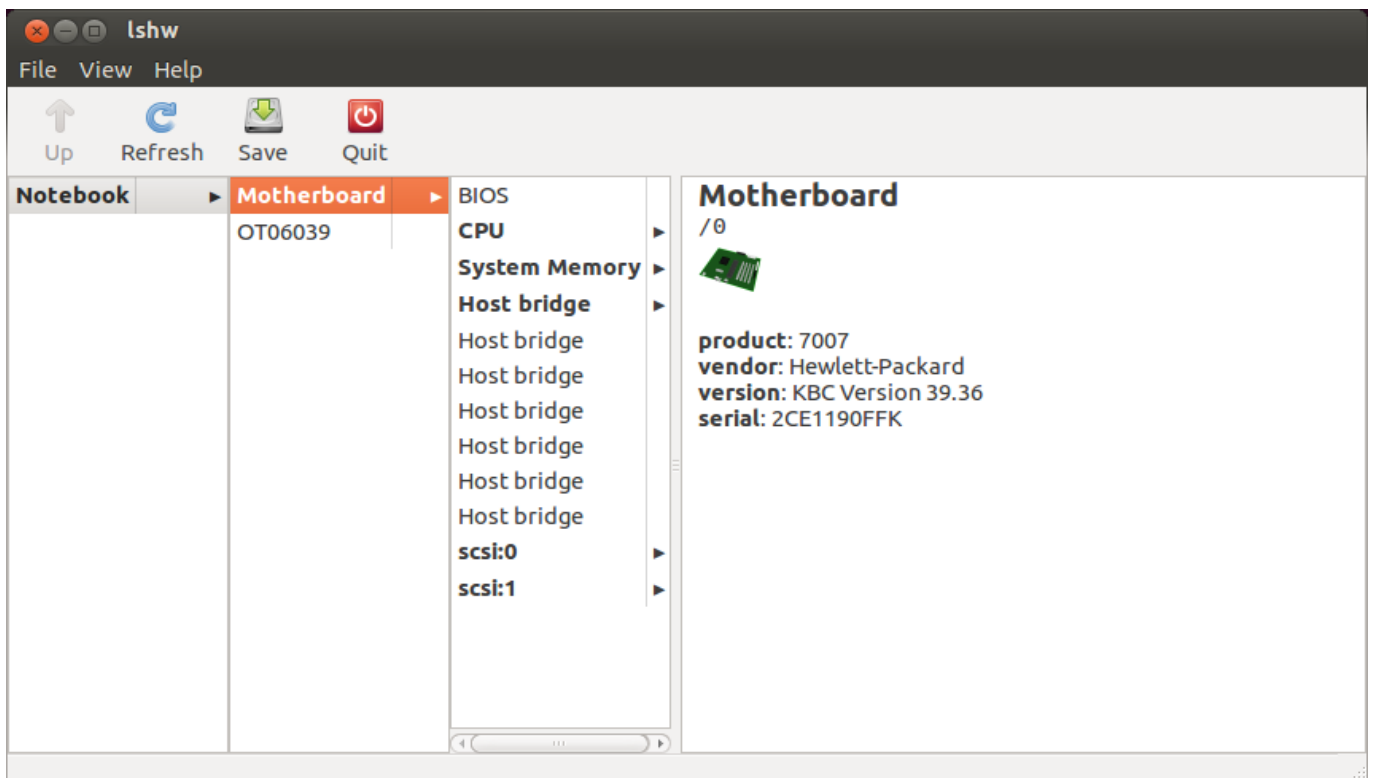
Nakon pokretanja, zatražit će da se autentirate, jer su za prikupljanje svih podataka potrebne administratorske ovlasti. Na početku ćete dobiti prazan ekran, pa će trebati kliknuti na **Refresh**:



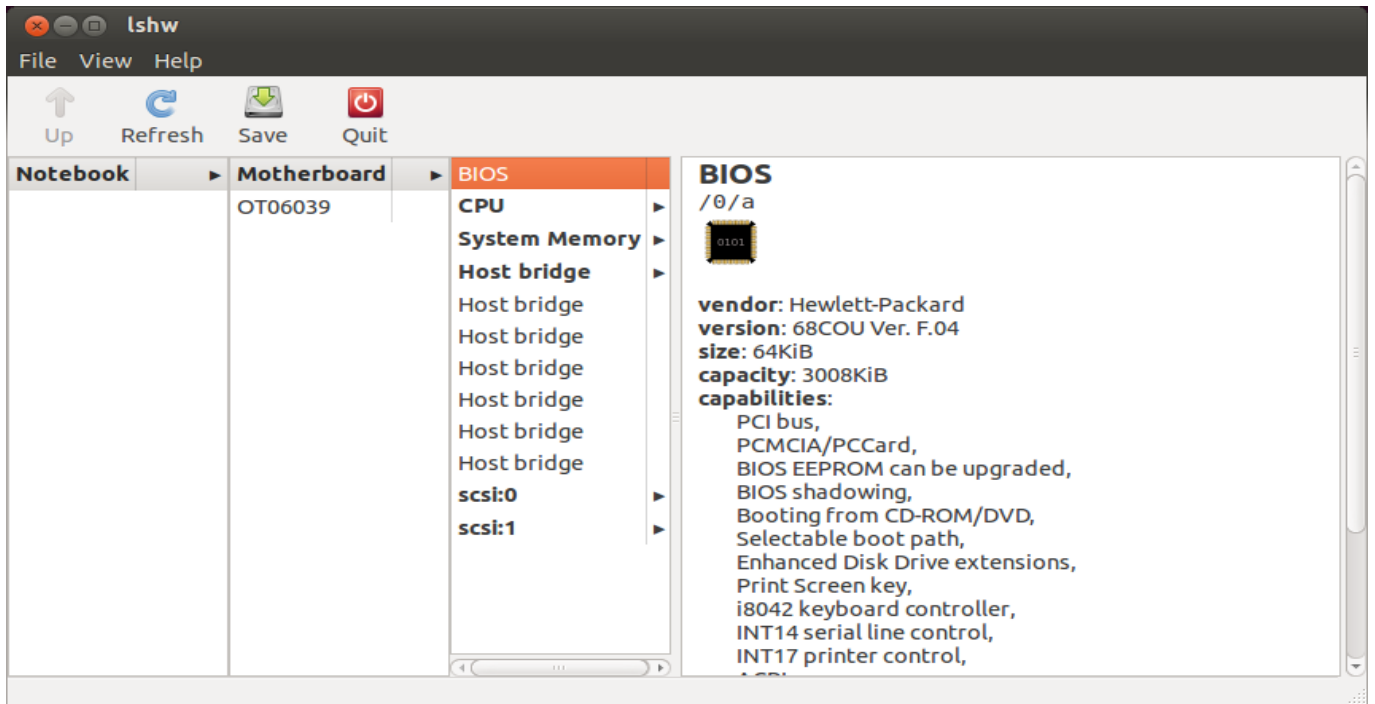
Zatim se pojavi ekran s osnovnim podacima o računalu (klasa **system**).



Za pregled ostalih klasa trebat će malo klikati, pa će se podaci pojavljivati u okvirima:




Podaci o BIOS-u:

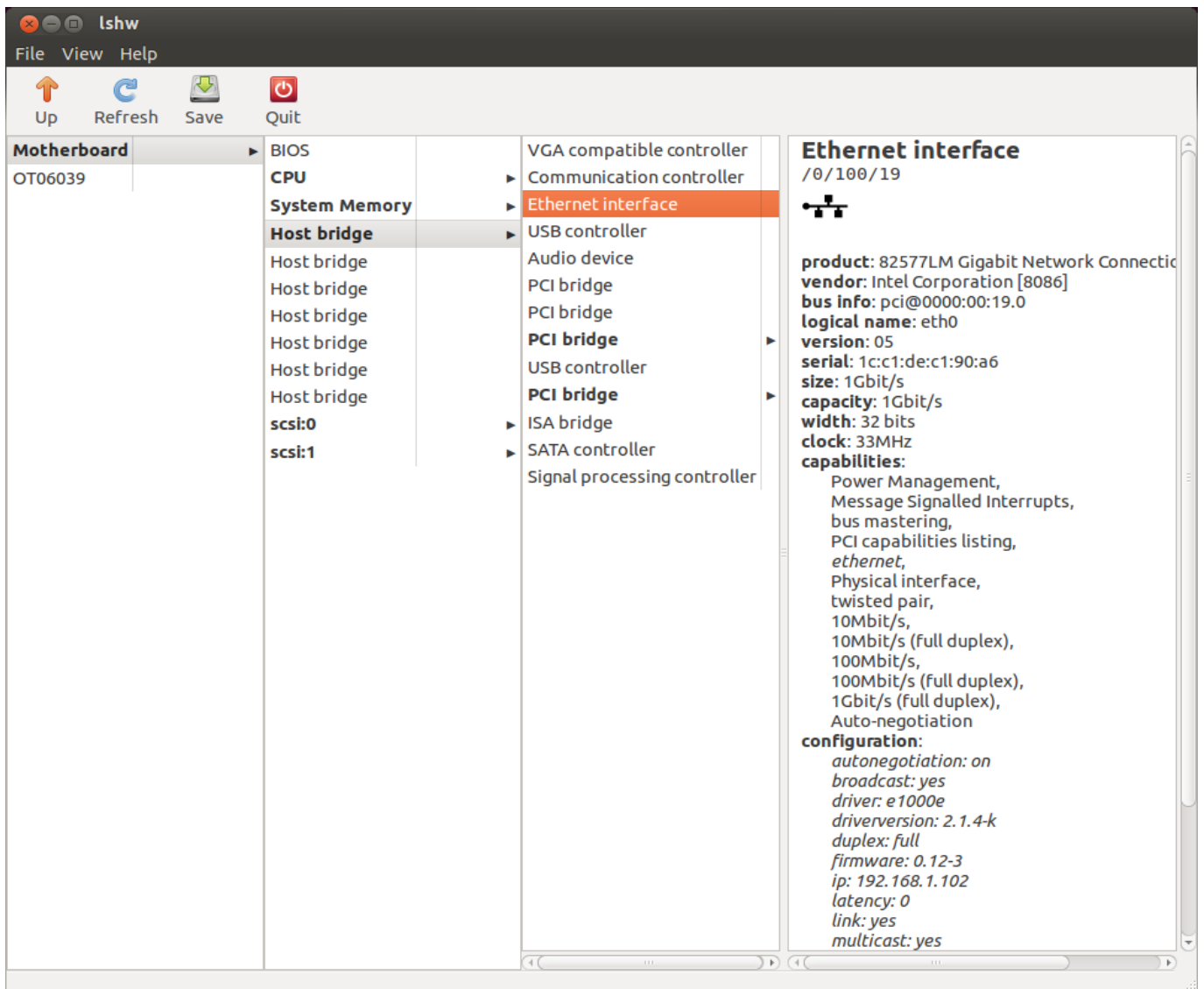


The screenshot shows the lshw application window with the BIOS section selected. The left sidebar shows a tree view: Notebook > Motherboard > BIOS. The main area displays the following information:

```


BIOS
/0/a

vendor: Hewlett-Packard
version: 68COU Ver. F.04
size: 64KiB
capacity: 3008KiB
capabilities:
  PCI bus,
  PCMCIA/PCCard,
  BIOS EEPROM can be upgraded,
  BIOS shadowing,
  Booting from CD-ROM/DVD,
  Selectable boot path,
  Enhanced Disk Drive extensions,
  Print Screen key,
  i8042 keyboard controller,
  INT14 serial line control,
  INT17 printer control,
  ...
  
```

Ethernet kartica:

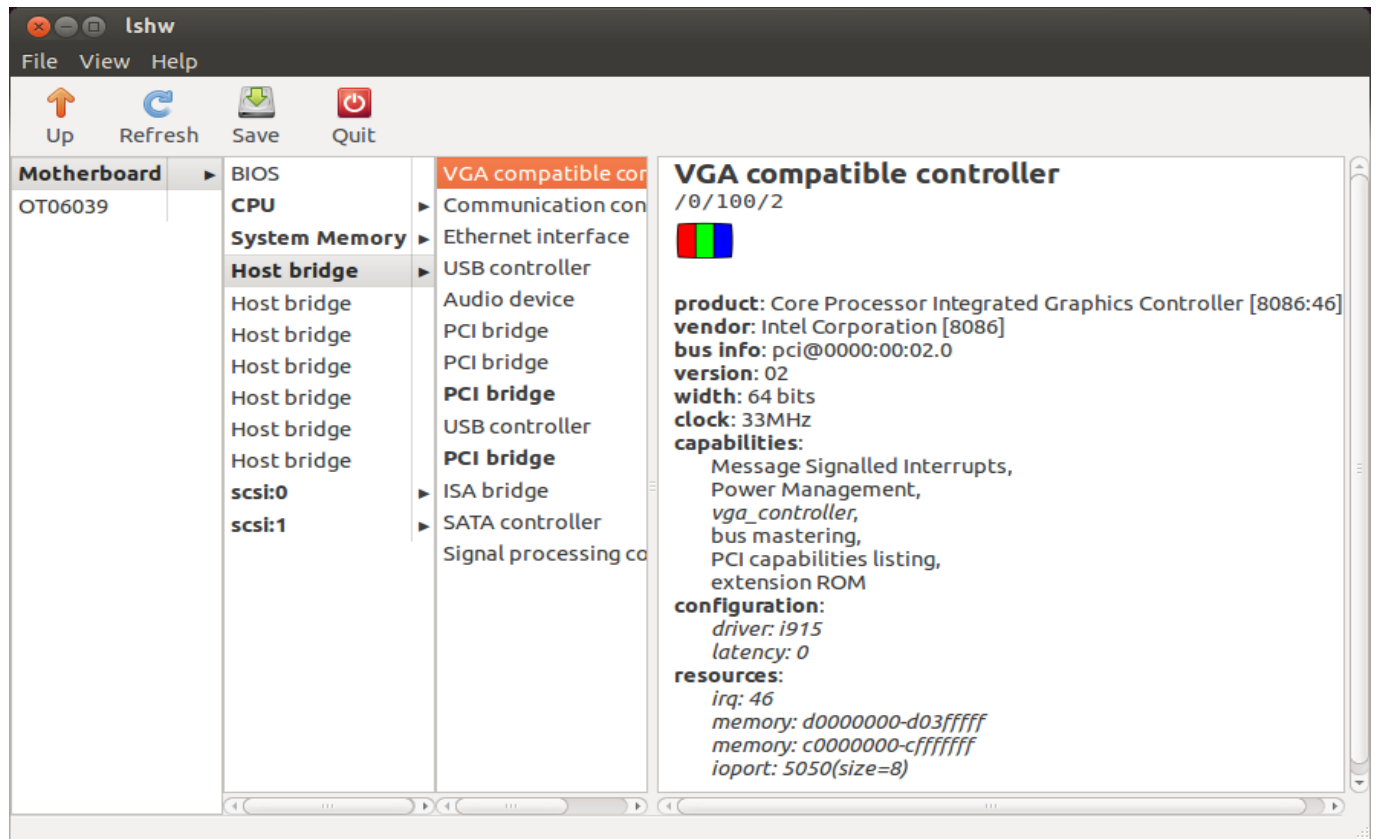


The screenshot shows the lshw application window with the Ethernet interface section selected. The left sidebar shows a tree view: Motherboard > Ethernet interface. The main area displays the following information:

```

Ethernet interface
/0/100/19

product: 82577LM Gigabit Network Connectio
vendor: Intel Corporation [8086]
bus info: pci@0000:00:19.0
logical name: eth0
version: 05
serial: 1c:c1:de:c1:90:a6
size: 1Gbit/s
capacity: 1Gbit/s
width: 32 bits
clock: 33MHz
capabilities:
  Power Management,
  Message Signalled Interrupts,
  bus mastering,
  PCI capabilities listing,
  ethernet,
  Physical interface,
  twisted pair,
  10Mbit/s,
  10Mbit/s (full duplex),
  100Mbit/s,
  100Mbit/s (full duplex),
  1Gbit/s (full duplex),
  Auto-negotiation
configuration:
  autonegotiation: on
  broadcast: yes
  driver: e1000e
  driverversion: 2.1.4-k
  duplex: full
  firmware: 0.12-3
  ip: 192.168.1.102
  latency: 0
  link: yes
  multicast: yes
  
```

Grafička kartica:



I tako dalje.

Napominjemo da nije potrebno instalirati Linux da biste koristili ovaj program. Možete ga pokrenuti s CD/DVD/USB uređaja i u izborniku umjesto instalacije odabrati testiranje, pa će se Linux instalirati u RAM disk.

Vezani članci:

[Prepoznavanje sklopovlja: naredba lshw](#) [1]

[Prepoznavanje sklopovlja računala](#) [2]

[Prepoznavanje sklopovlja: podaci iz BIOS-a](#) [3]

[Prepoznavanje sklopovlja: naredba lspci](#) [1]

pon, 2013-07-15 06:50 - Aco Dmitrović **Kuharice:** [Linux](#) [4]

Kategorije: [Hardware](#) [5]

Vote: 0

No votes yet

Source URL: <https://sysportal.carnet.hr/node/1291>

Links

- [1] <https://sysportal.carnet.hr/node/1290>
- [2] <https://sysportal.carnet.hr/node/1286>
- [3] <https://sysportal.carnet.hr/node/1287>
- [4] <https://sysportal.carnet.hr/taxonomy/term/17>
- [5] <https://sysportal.carnet.hr/taxonomy/term/24>